



The Stile, Heath And Reach, Leighton Buzzard

£425,000



The Stile, Heath And Reach, Leighton Buzzard

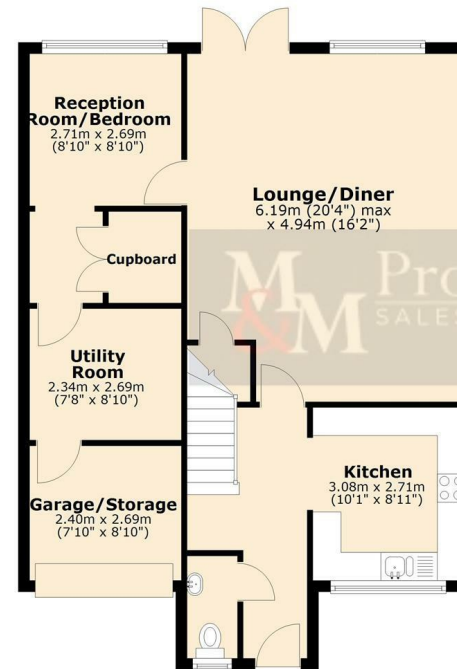
- Three Bedroom Detached Home
- Spacious Open-Plan Living/Dining Area With Garden Access
- Situated In The Sought-After Village Of Heath And Reach
- Generous Driveway Providing Off-Road Parking For Multiple Vehicles
- Convenient Downstairs W/C
- Private Rear Garden
- Versatile Additional Reception Room (Currently Used As A Bedroom)
- Useful Utility Area And Part-Converted Garage/Storage Space
- Three Well-Proportioned First Floor Bedrooms
- Modern Kitchen Positioned At The Front Of The Property



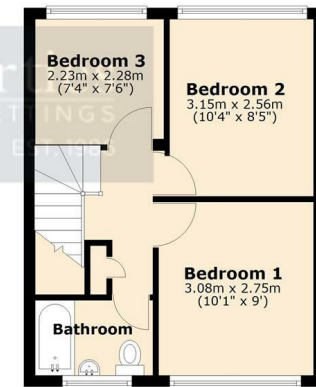
Floor Plan



Ground Floor



First Floor



Viewing

Please contact our Leighton Buzzard Office on 01525 377733.

If you wish to arrange a viewing appointment for this property or require further information.

IMPORTANT: Whilst we aim to make our details accurate and reliable, if there is any point of particular concern to you, please contact the office. The apparatus, equipment, fittings and services have not been checked and therefore it is in the purchaser's interest to establish the working condition of the appliance included. Personal items such as furnishings which may be shown in the photographs are not included in the asking price. No survey has been carried out by M & M Properties. Measurements have a tolerance of +/- 3". Please note that this floorplan has not been drawn to scale and is therefore for room layout purposes only. It does not constitute or form part of a contract. Doors may be hung in opposite directions.

27/29 Hockliffe Street, Leighton Buzzard - LU7 1EZ

Sales: 01525 377733 - Lettings: 01525 371997

sales@mandmproperties.co.uk - lettings@mandmproperties.co.uk

LOCAL PEOPLE WORKING FOR YOU